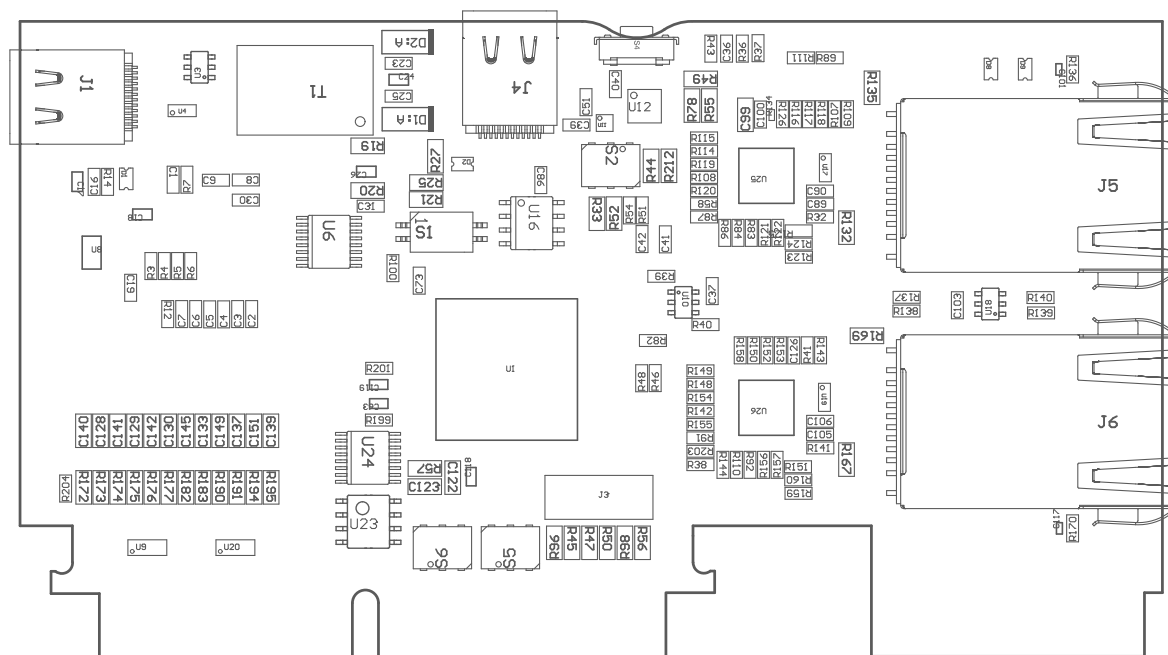
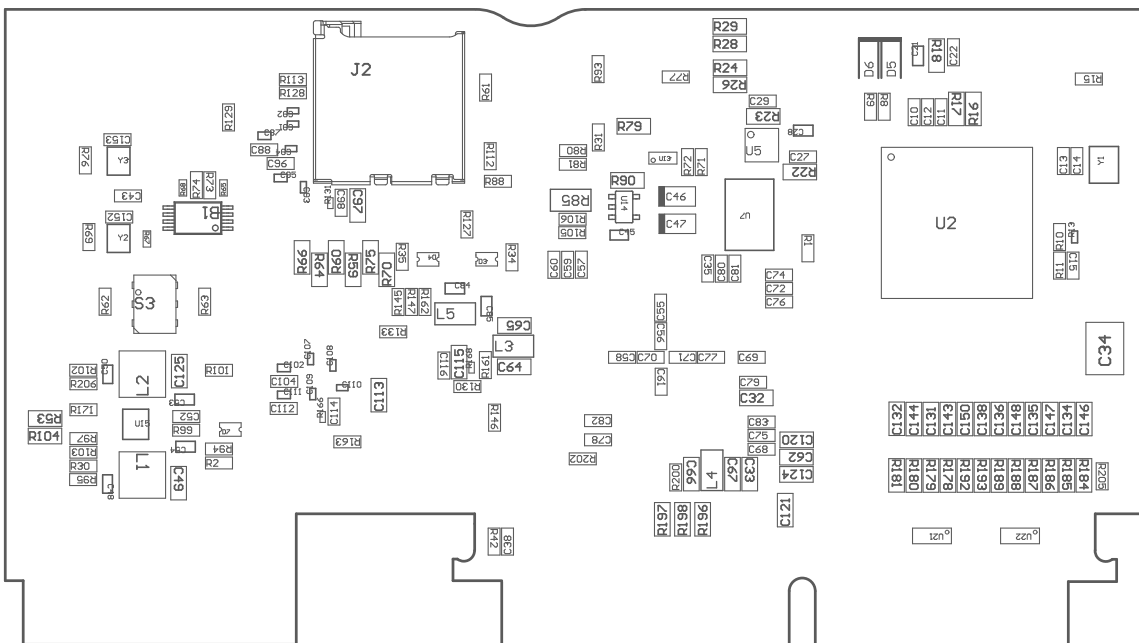


Z24 ■ These assemblies must comply with workmanship standards IPC-A-610 Class 2, unless otherwise specified.



ASSEMBLY VARIANT: [No Variations]

PCB VIEWED FROM TOP SIDE	BOARD #: MCU114	REV: E2	SUN REV:
	TID #: N/A		
PLOT NAME = Top Assembly Drawing	GENERATED : 6/13/2023 7:13:21 PM		TEXAS INSTRUMENTS



COMPONENTS MARKED 'DNP' SHOULD NOT BE POPULATED.
 ASSEMBLY VARIANT: [No Variations]

	BOARD #: MCU114	REV: E2	SVN REV:
	TID #: N/A		
PLOT NAME = Bottom Assembly Drawing	GENERATED : 6/13/2023 7:13:21 PM	TEXAS INSTRUMENTS	